

Criatura, Uma Autópsia

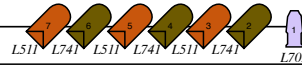
Venue: Teatro de Container

Designer: Rodrigo Silbat (11)95873-6660

23/04/19

Light Plot

scenography



Área Cênica

scenic area

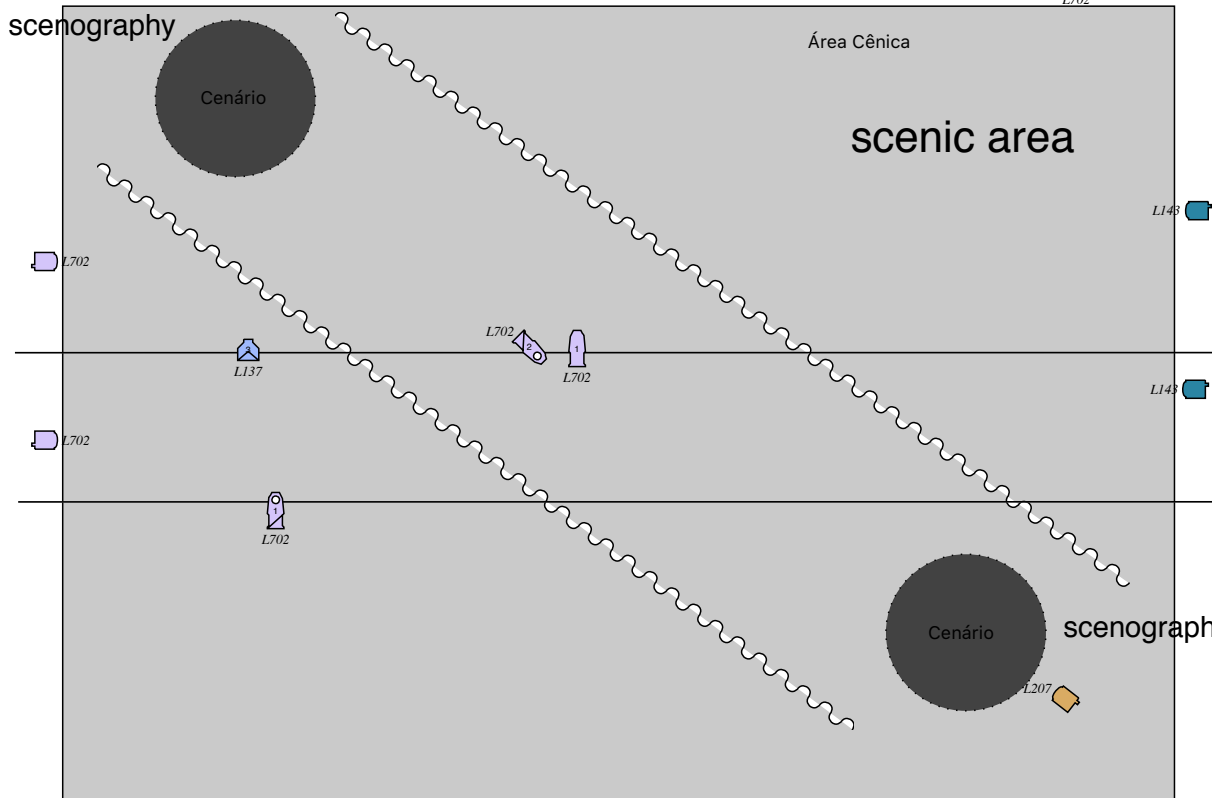
Key			
	36° Source Four		Iris
	26° Source Four		
	Source #5		
	Par64 #5		

L143

Necessidades Técnicas: 2 seriados
Porta-gel para todos os refletores

L143

scenography



Platéia

audience

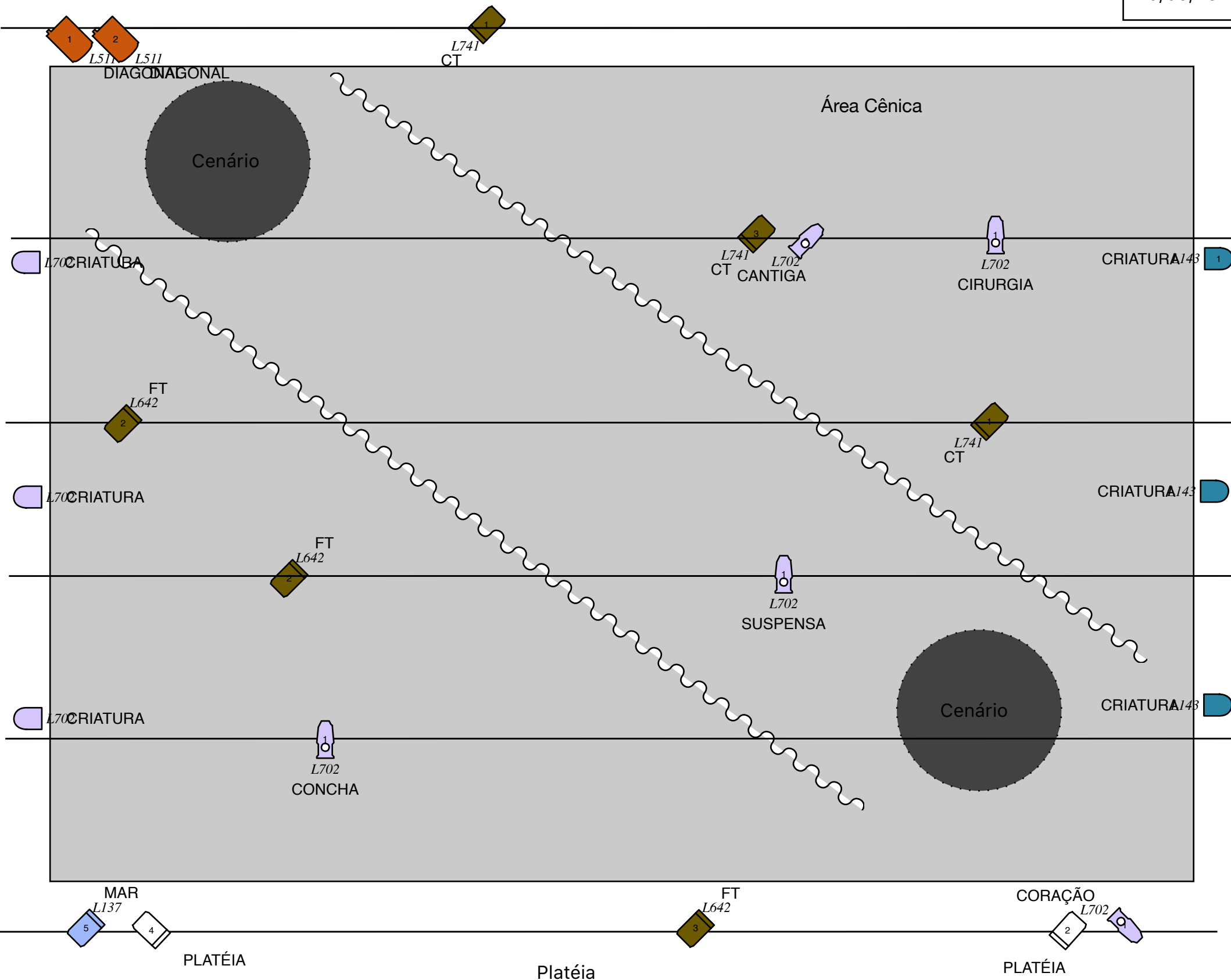
Criatura, Uma Autópsia

Venue: Arthur Azevedo - Sala Multiuso

Designer: Rodrigo Silbat (11)97825-9999

10/05/23

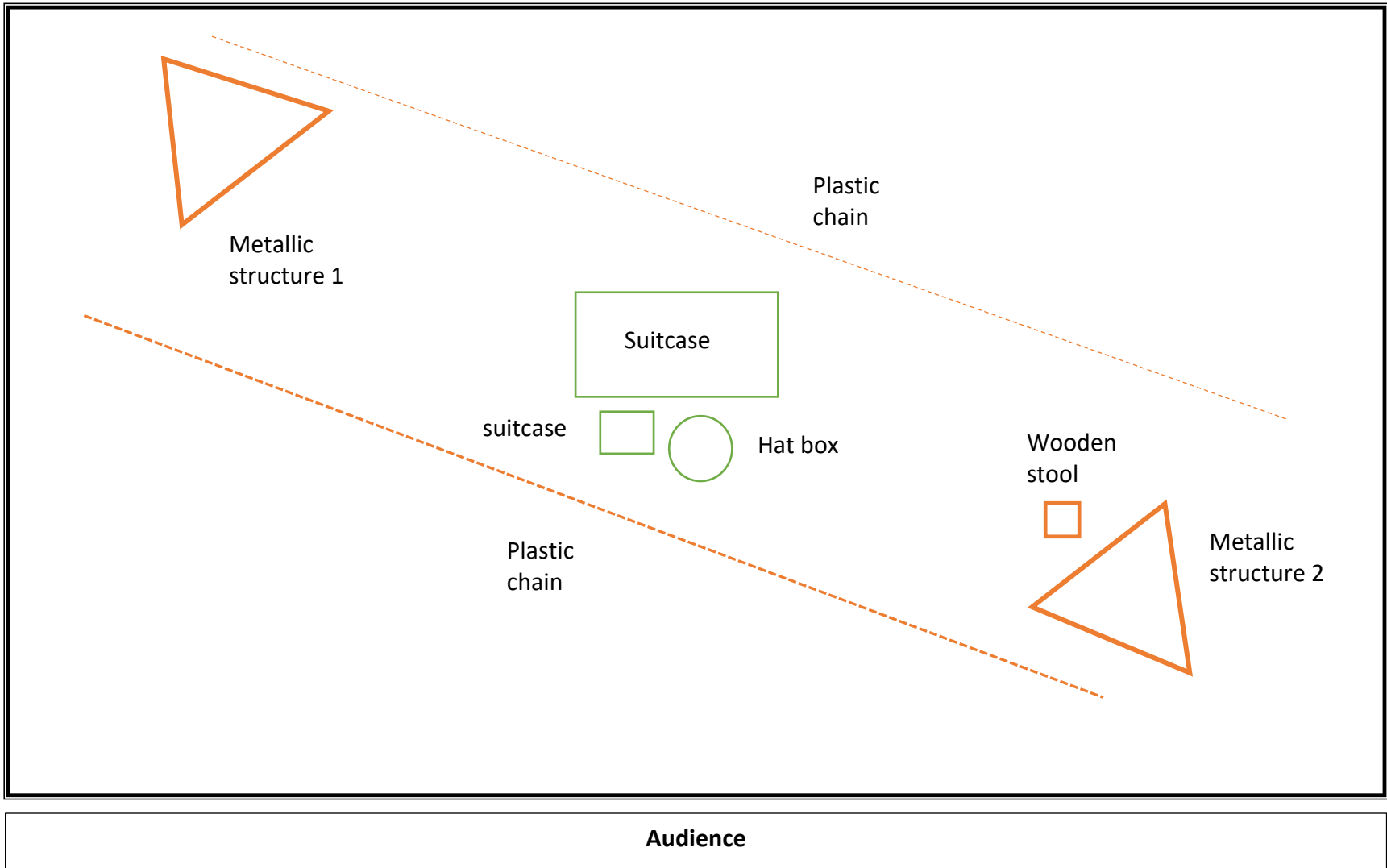
Light Plot



- Necessidades Técnicas:
- 1 cabo seriado para lampadas do cenário fundo;
 - 1 lâmpada 220v para o cenário FRENTE
 - Todos os refletores usam porta Gel
 - Refletores da FT e do CT usam Bandoor para ajustar a luz para diagonal

Key	
Use Color	50° Source Four
#	PC
	Fresnel
	par32
	Iris

CREATURE, AN AUTOPSY – SET DESIGN



TECHNICAL REQUIREMENTS

CREATURE, AN AUTOPSY

Solo performance by Bruna Longo

Rider observation: The light design is adaptable to different circumstances but it is important to have possibility for black out. We send two different light riders for reference.

Set up time for the light: 2-3 hours.

Sound: PA with auxiliary cable input

Minimum dimensions of stage: 5 meters wide, 5 meters deep and 4 meters high.

Description of the scenography: two metallic structures (light - conduit), the tallest of them 2,10 meters high and the smaller one with 1,40 meters. A large suitcase lined with iron. Scenic objects. Two 6-meter chains (can be disassembled) delimiting the space. We ask for the festival to lend us a shovel and a short stool – the only objects we do not bring with us while touring when flying.

Set up time for the scenario: 30 minutes.

TRAVELING CREW

1 actor, 1 sound operator, 1 light operator

CREATURE, NA AUTOPSY
SCENOGRAPHIC REQUIREMENTS

The performance does not travel with the following items and would need for them to be organized by the festival

A SHORT STOOL AND A SHOVEL

